



GS2-24 VERSASTUDIO

Dealer presentation v.1 – 14/09/2022

This document is for authorized dealers only. The information within may be confidential and should not be shared or publicized without the consent of Roland DG

Date	Version	Description of changes
Sept 14 th , 2022	1.0	First edition -started

A Roland VersaSTUDIO GS2-24 desktop cutting plotter is shown in a professional workspace. The plotter is white and grey, with a large sheet of paper being cut. To the left of the plotter is a laptop and a cup of pens. To the right is a desk lamp and a pair of glasses. The background is a grey wall with a large screen displaying the text "VersaSTUDIO GS2-24" and "Join the Professionals".

VersaSTUDIO GS2-24

Join the Professionals

Compact, powerful and easy to use, the GS2-24 desktop cutting plotter is perfect for starting your graphics business or bringing graphics production in-house

- ✓ Intuitive and user-friendly operation
- ✓ Higher speed and increased power to easily cut hundreds of materials
- ✓ Highest cut performance accuracy
- ✓ Compact design

One Device for A Wide Variety of Applications

The new GS2-24 supports a wider variety of blades enabling a broader range of applications such as **customized garment, signage, stickers & decals, windows displays** and so on

Furthermore, full-colour applications can also be produced in combination with a BN-20/A or other printers



PRODUCT FEATURES

Authorised Dealer Use Only



Intuitive Software included

CutStudio included, letting you easily create designs and cut in a simple workflow



Roland DG Connect

Build an efficient and reliable business with real-time analytics



VersaWorks 6 RIP

You can now add a GS2 without having a printer and benefit from all the advance functionalities of Versaworks



Cut Printed Sheets Accurately

Precise crop-mark detection lets you cut designs produced on your desktop printer



Monitor Status Easily

Track the status of every cutting job with a clear LED signal on the cutting carriage



Built to Suit your Connectivity

Featuring both Ethernet and USB ports, the GS2-24 can work with your set-up



On Time, Every Time

Meet any deadlines and deliver larger orders faster with 70% more cutting speed (10-850 mm/s) than the previous model



Create without limits

With 40% more cutting force (30-500 gf) than the previous model, you can cut the most intricate designs from a vast range of materials

SOFTWARE

Authorised Dealer Use Only

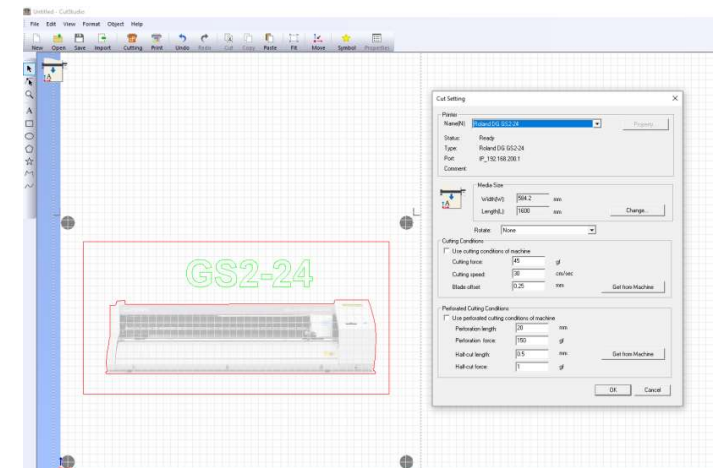
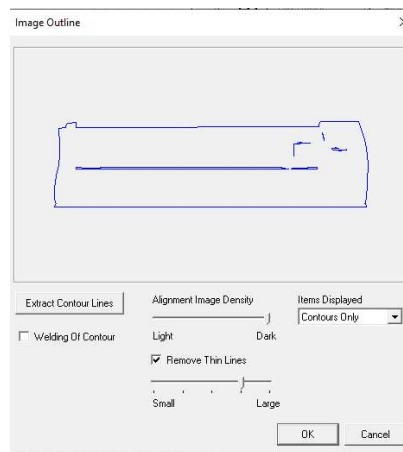
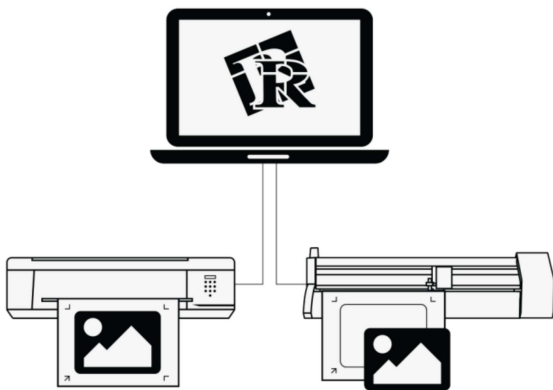


CUTSTUDIO

Authorised Dealer Use Only

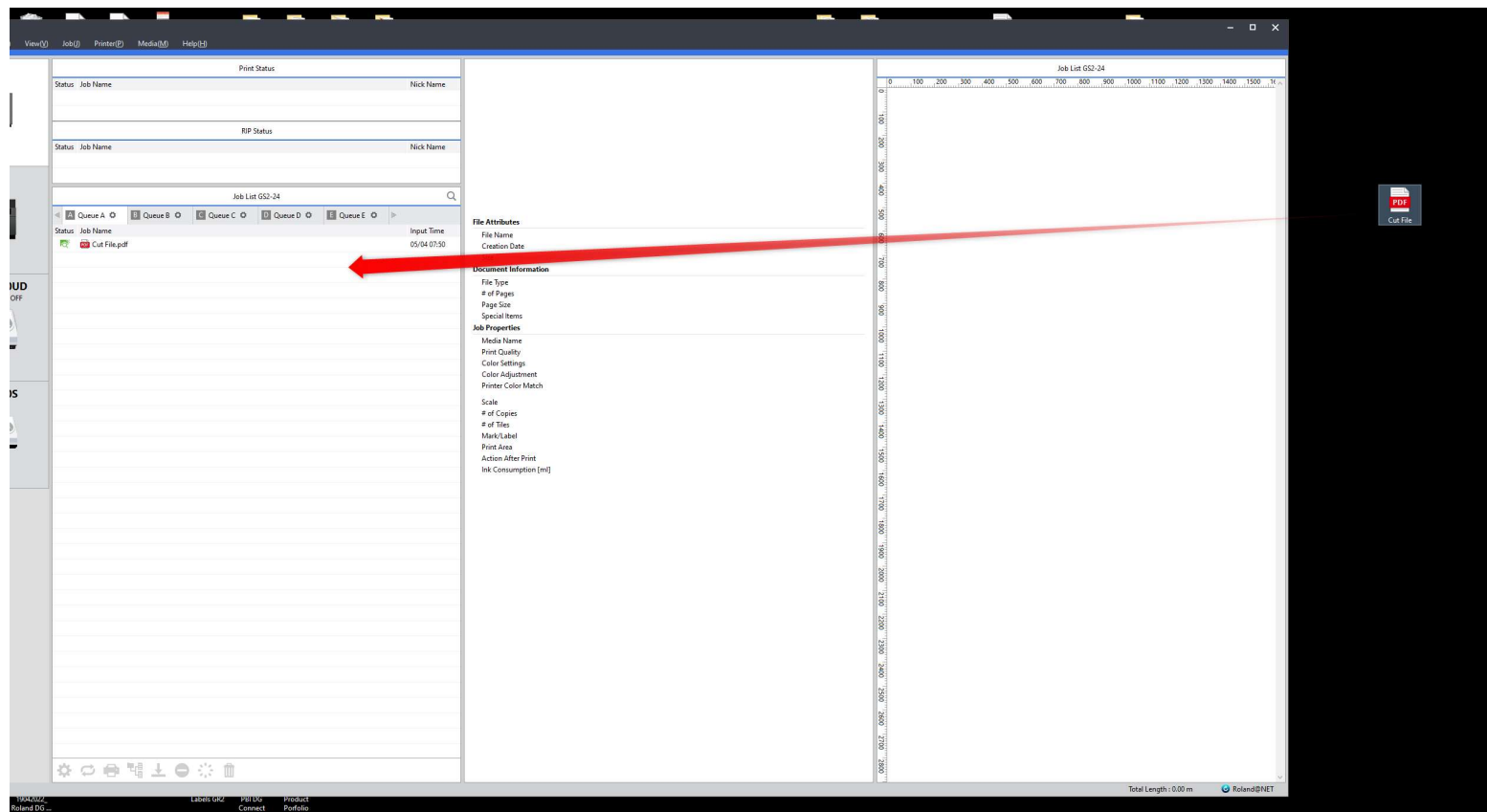


- ◆ Roland's powerful CutStudio software provides the necessary tools to design and create professional custom cut graphics for a wide range of applications
 - ✓ Vectorization tool generates cut lines from any JPG or bitmap image
 - ✓ Quickly and easily enlarges , reduces, positions, rotates, and mirrors images
 - ✓ Preview on your cut jobs media orientation
 - ✓ Define cutting order by using coloured layers
 - ✓ Cuts TrueType fonts without the need for outlining
 - ✓ Add the Crop marks to print-then-cut applications
 - ✓ Includes plug-ins for latest Adobe® Illustrator® (Mac & PC) and CorelDRAW® (PC only) for Direct cut from Adobe® Illustrator® and CorelDRAW®



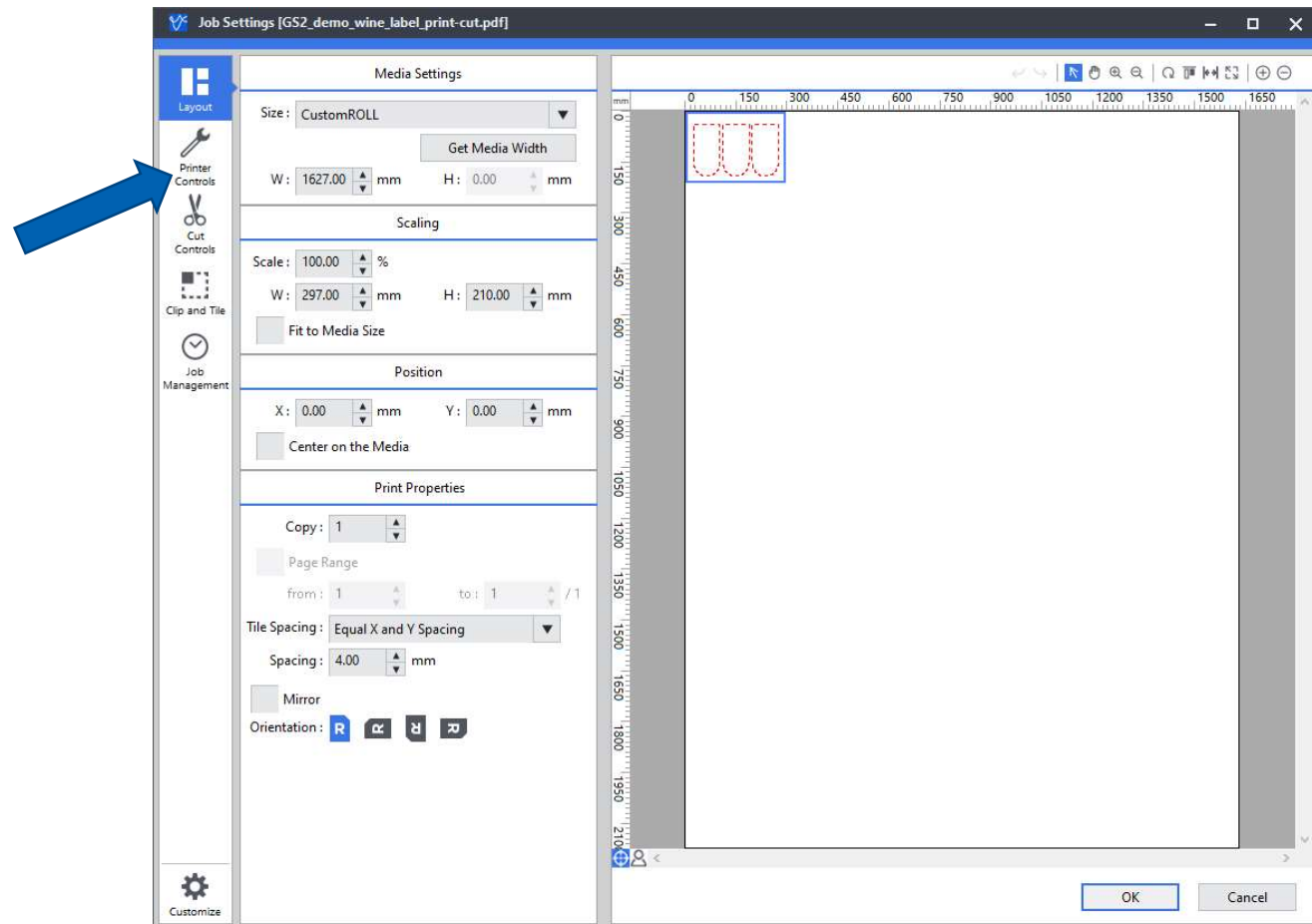
VERSAWORKS – NEW FEATURES

- ◆ Drag and drop function to load files in the Queue. It is no longer needed to have a Roland printer to load directly vector files in the queue of the cutter to then cut these files.



VERSAWORKS – NEW FEATURES

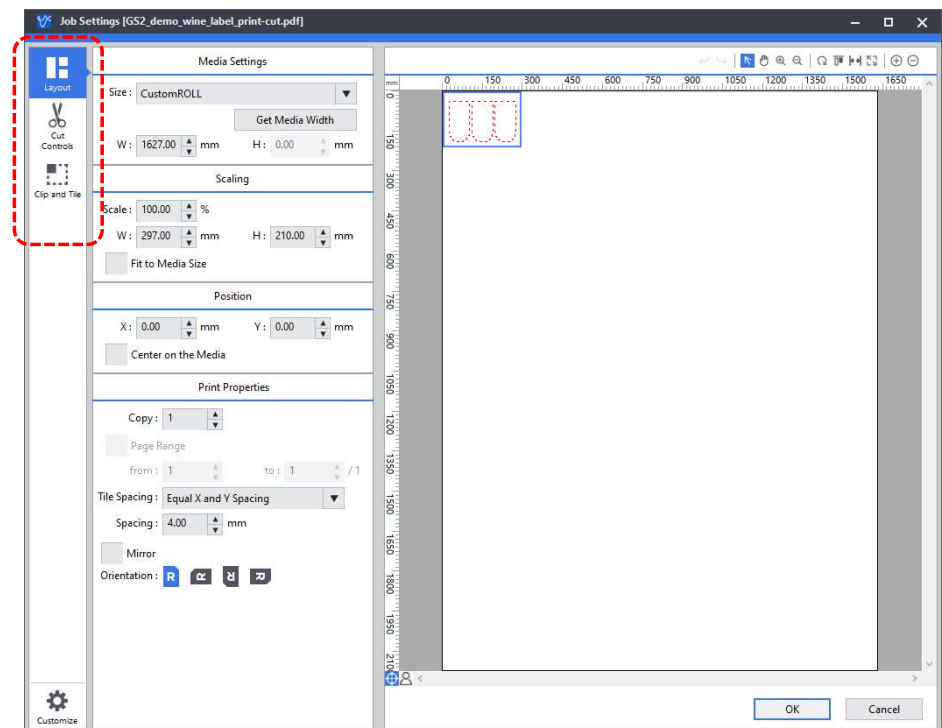
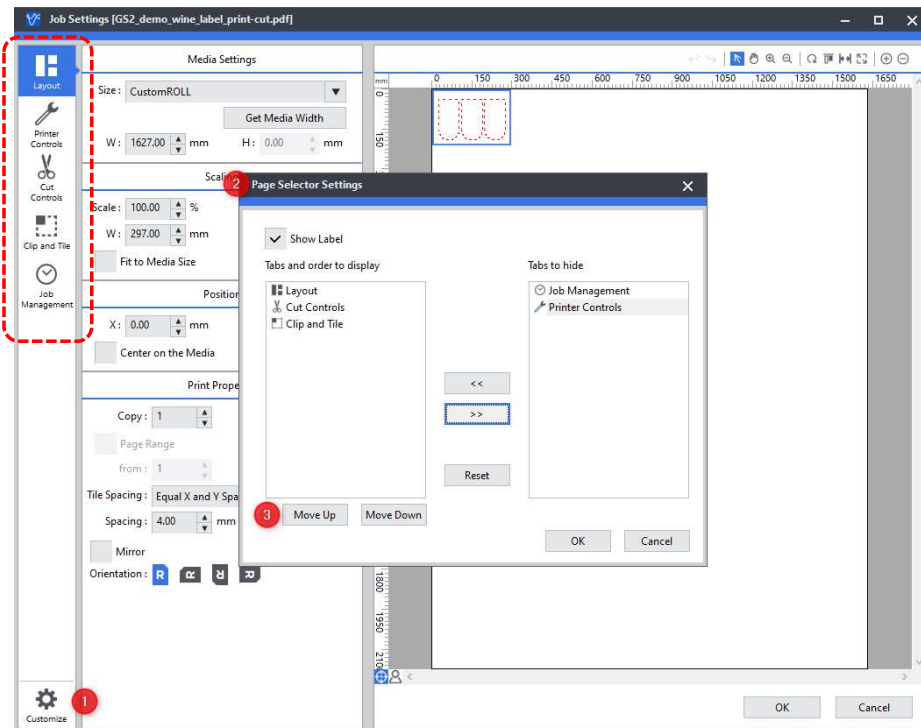
- ◆ Adding Names below each icon



VERSAWORKS – NEW FEATURES

◆ Icons

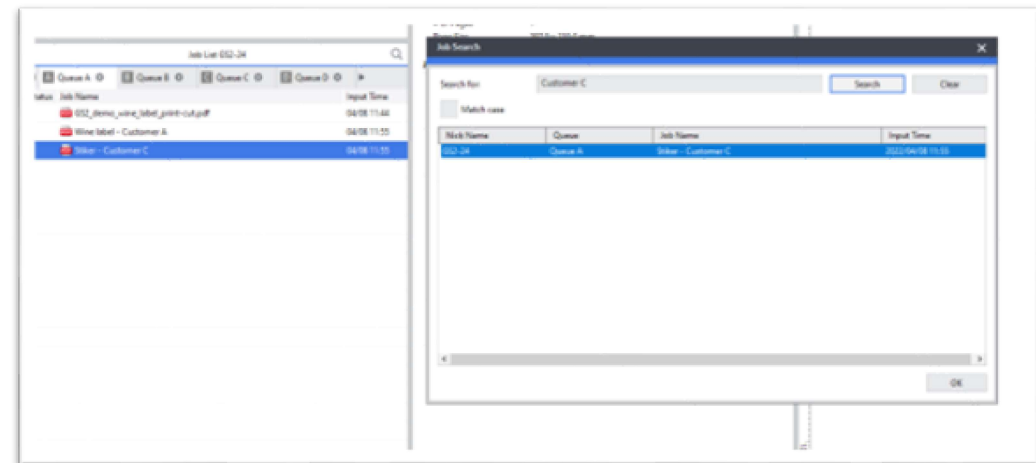
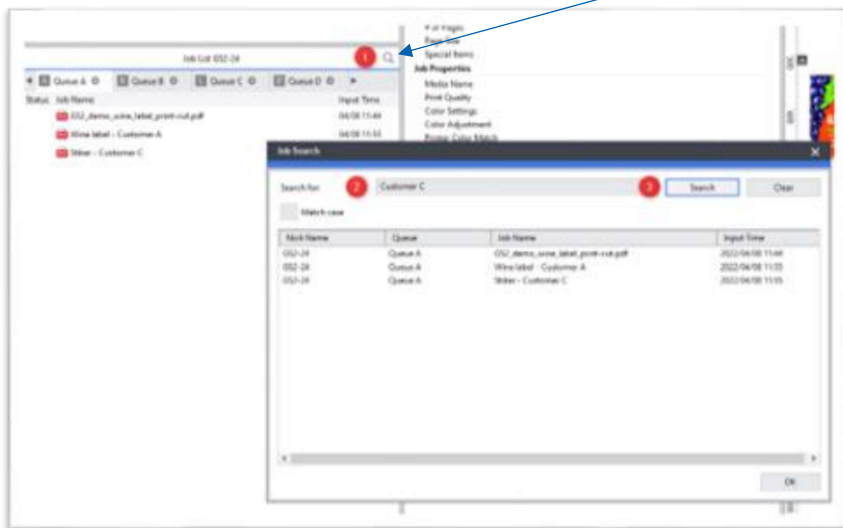
- ✓ Streamline your user interface by hiding non-used functions
- ✓ Customers can move frequently used functions to the top and unfrequently used functions below



VERSAWORKS – NEW FEATURES

◆ Job Search Function

- ✓ Customer can search their jobs by Job Search Function. Click on the magnifying glass



ROLAND DG CONNECT

No	For Whom	Features		Note
1	For customers	Dashboard	This feature allows GS2-24 customers to view the amount of output during any period, such as daily, weekly, or monthly. This means customers can understand areas for business improvement. Until now, this information wasn't available in one place, so it can aid calculation of costs and hours worked.	Cut data area and cutting status information are displayed.
2		Job Logs	Follow up your production with the Job Log and get a fast way to analyze production errors, via the Error Log. Connecting your dealer with your Roland DG Connect account results in a faster Error Log Analytics done remotely by the dealer.	
3		Error Logs		
4		Firmware	Get notifications and links to update Customer's firmware with a single click.	
5		Document and guide	View the manual Library with the latest documentation and guides.	
6		Business Dashboard	Gain insights to Customer's job profitability and costs to keep their business running in top shape.	Product status and media usage are displayed. No thumbnail image and ink remaining information are available.
7		Product Monitoring	Easily track the current status of Customer's device in a single view.	
8	For Service Engineers	SE Maintenance Dashboard		

*Roland DG Connect is only available when connected via Ethernet and the computer has access to internet.

SOFTWARE

Authorised Dealer Use Only



Software	Supported OS	Supported Application
Windows driver	Windows/8.1 (32-bit/64-bit) Windows10 (32-bit/64-bit) Windows11 (64-bit)	-
Roland CutStudio	Windows/8.1 (32-bit/64-bit) Windows10 (32-bit/64-bit) Windows11 (64-bit)	Ver. 3.12 or later
Roland CutStudio Plug-in for Adobe Illustrator	Windows/8.1 (32-bit/64-bit) Windows10 (32-bit/64-bit) Windows11 (64-bit) Mac OS X 10.4 or later	Adobe Illustrator CC2015 or later
Roland CutStudio Plug-in for CorelDRAW	Windows/8.1 (32-bit/64-bit) Windows10 (32-bit/64-bit) Windows11 (64-bit)	CorelDRAW 2018 or later
VersaWorks	Windows/8.1 (32-bit/64-bit) Windows10 (32-bit/64-bit) Windows11 (64-bit)	Ver. 6.14 or later
Roland DG Connect Hub	Windows 10 (64-bit)	tbc

INSTALLATION

Authorised Dealer Use Only



INSTALLATION

- Customers can find the necessary information regarding the GS2-24 installation and operation by scanning on the QR code easily


GS2-24

Quick Access Guide


Installing the Machine and the Software

Install the machine, and then install the software. For more information, see the manuals by using the following URLs or QR codes.


Step 1 : Machine installation



https://downloadcenter.rolanddg.com/contents/manuals/GS2-24_INS-H_EN/index.html




Step 2 : Installation and initial settings




For Windows:

https://downloadcenter.rolanddg.com/contents/manuals/GS2-24_INS2-H_WIN_EN/index.html




For Macintosh:

https://downloadcenter.rolanddg.com/contents/manuals/GS2-24_INS2-H_MAC_EN/index.html




This completes the preparation necessary to use the machine.




Company names and product names are trademarks or registered trademarks of their respective holders.
 Copyright © 2022 Roland DG Corporation
<http://www.rolanddg.com/>
 R1-220222TW


For Macintosh



For Windows

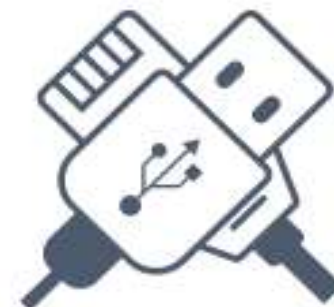


Machine Installation



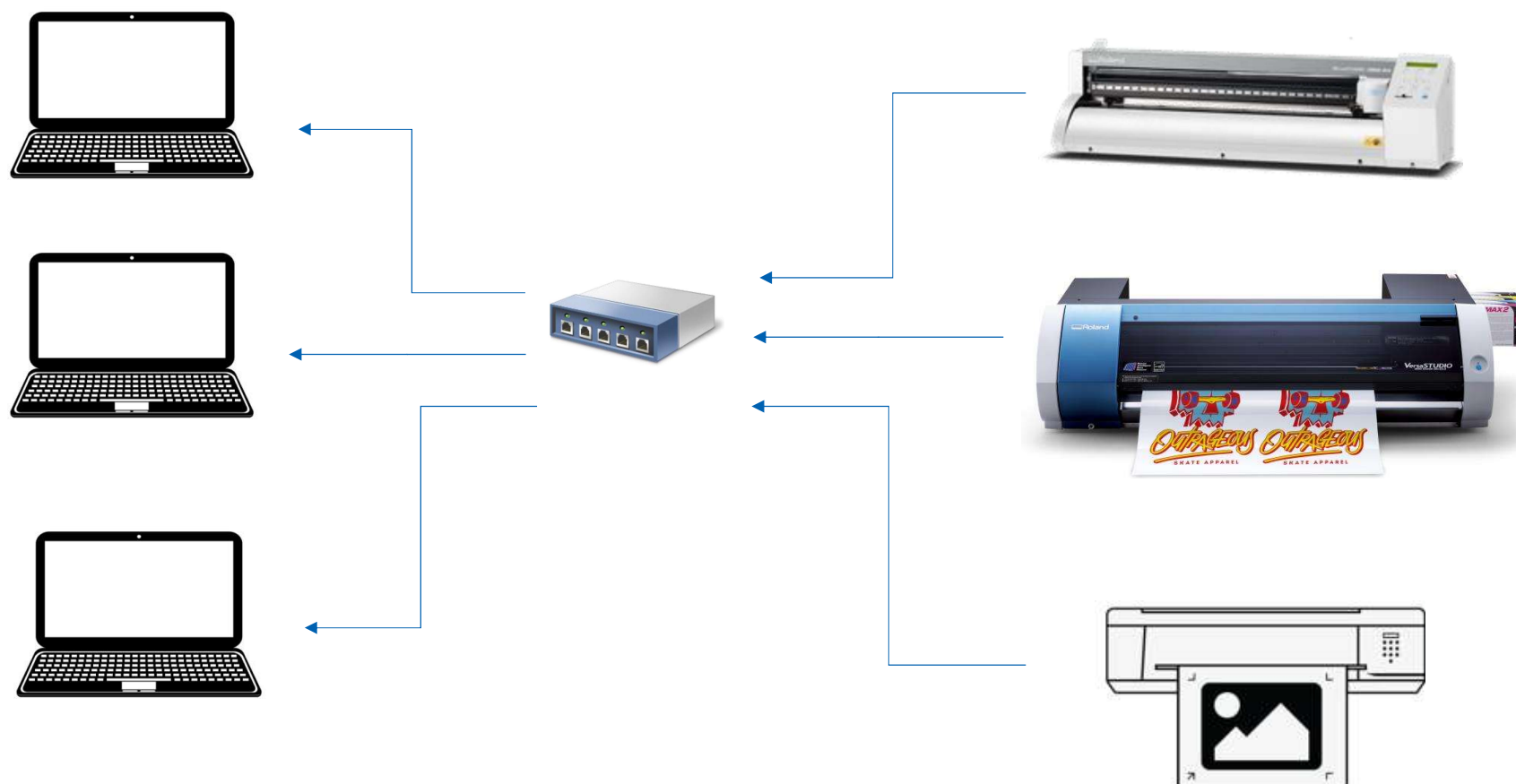
CONNECTIVITY

Authorised Dealer Use Only



ETHERNET

- ◆ Use the Ethernet when you have one or more computers and support many printers and systems simultaneously



CONNECTING GS2-24 (ETHERNET)

[Automatic setting of IP address]

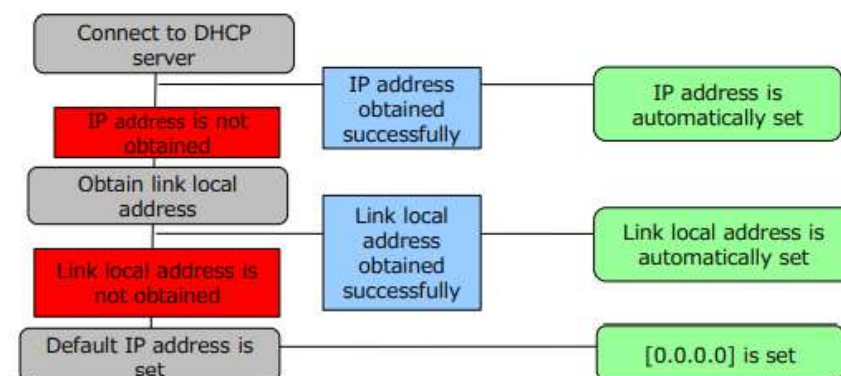
- ◆ With the DHCP function being [On], an IP address is automatically obtained from a DHCP server. If an IP address cannot be obtained from DHCP server, a link local address will be automatically obtained.
- ◆ If a link local address is not obtained, or if the machine is not connected with LAN cable, [0.0.0.0] (default) will be set.
- ◆ You can enter any IP address when DHCP function is set to [Off].

[Timing when IP address is switched to a new IP address]

- ◆ Valid period [24 hours] has passed after IP address was obtained (Default is 24 hours, but it may have been changed by an administrator.)
- ◆ If another PC is using the IP address after that IP address was obtained *In VersaWorks, if IP address is changed, a new IP address is detected when VersaWorks starts up and it will be configured.

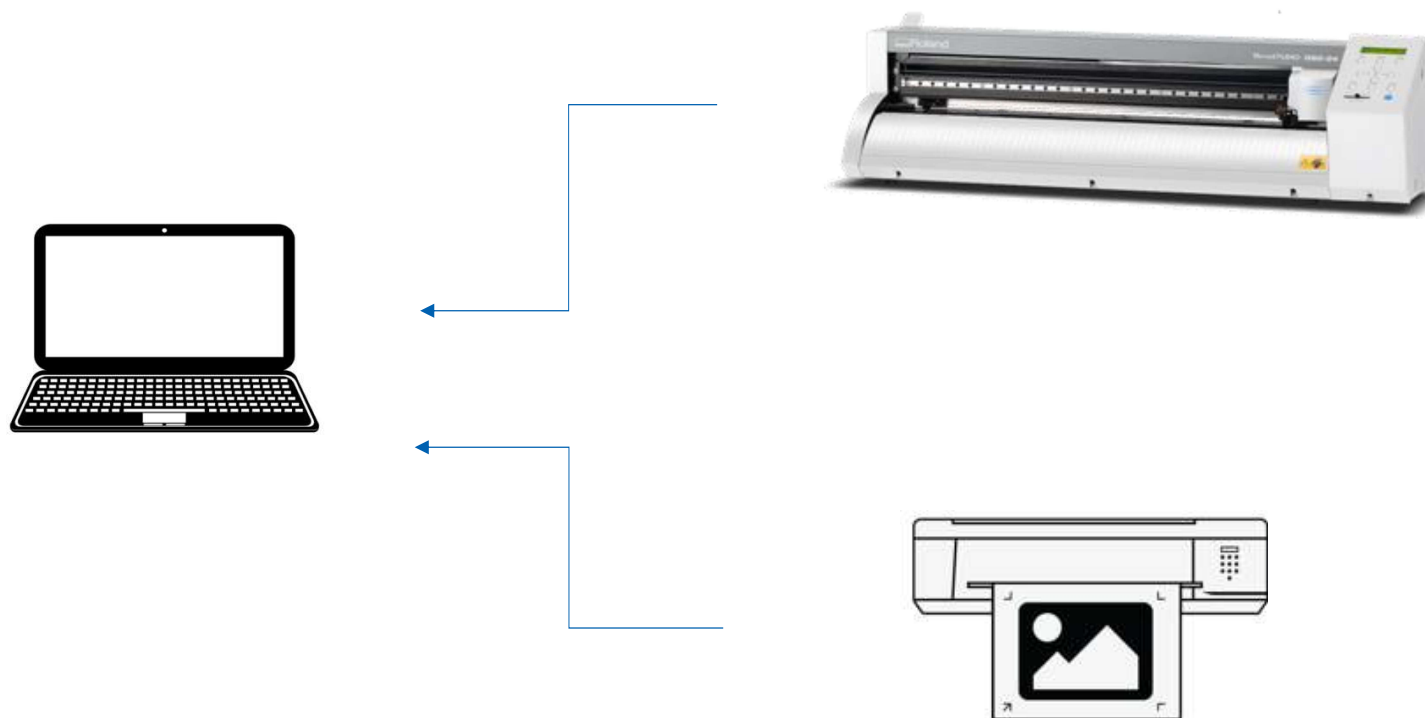
[The timing when IP address is obtained]

- ◆ When Power is turned ON/OFF
- ◆ When DHCP is set to ON/OFF
- ◆ LAN cable is connected/disconnected when the power is ON.



USB

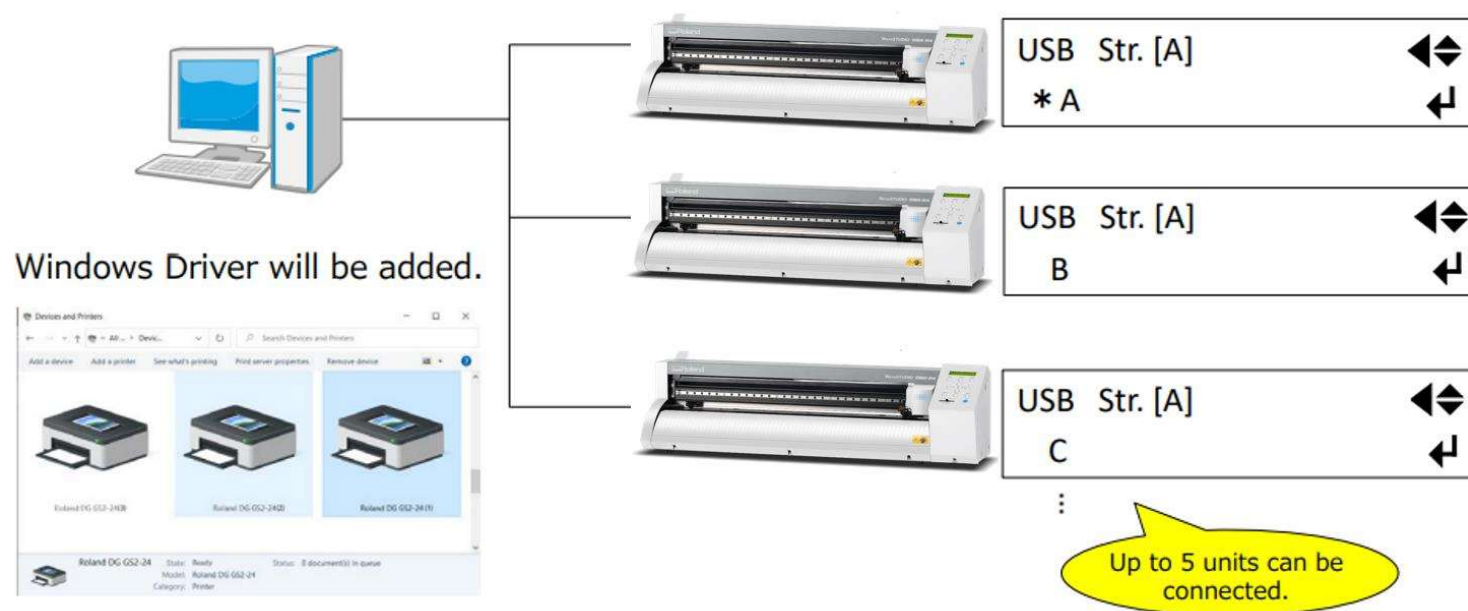
- ◆ Use USB when you want to connect the device directly to 1 computer and you don't have a local Network



*Roland DG Connect is NOT available when connected via USB

CONNECTING GS2-24 (USB)

- It is possible to connect multiple units of GS2-24 from one PC. By setting the USB number of each machine to A, B, C, D or E, respectively, it becomes possible to identify multiple units. (Default: A)



BLADES

Authorised Dealer Use Only



BLADES

Reference	Offset	Angle (RDG, β)	Angle (Standard, α)	Packaging unit (pcs)	Cardboard	Flock	Floor Laminate	Heat Transfer	Magnetic*	PerfCut	Reflective	Sandblast	Twill	Vinyl ≤ 76 μm	Vinyl ≥ 76 μm	Window Tint
ZEC-A5025-3	0.25 mm	48°	42°	3				x						x	x	
ZEC-U5025	0.25mm	50°	40°	5				x						x	x	
ZEC-U5032*	0.25mm	55°	35°	2				x						x	x	
ZEC-U5022	0.25mm	55°	35°	2												
ZECA-1005-3	0.25mm	50°	40°	3				x						x	x	
ZEC-U1005	0.25mm	50°	40°	5				x						x	x	
ZECA-1715-3	0.25 mm	33°	57°	3								x				
ZEC-U1715	0.25mm	17°	73°	5								x				
ZECA-3050-5	0.5 mm	33	57°	5	x	x	x		x		x	x	x		x	
ZEC-U3050	0.5 mm	32°	58°	5	x	x	x		x		x	x	x		x	
ZECA-3017-3	0.175mm	42°	48°	3										x	x	
ZEC-U3017	0.175mm	45°	45°	3										x	x	
ZEC-U3075	0.75 mm	32°	58°	5	x		x		x	x	x	x				
ZEC-U3100	1.00 mm	32°	58°	5	x		x		x	x	x	x				
ZEC-U5010	0.50 mm	55°	35°	2												x

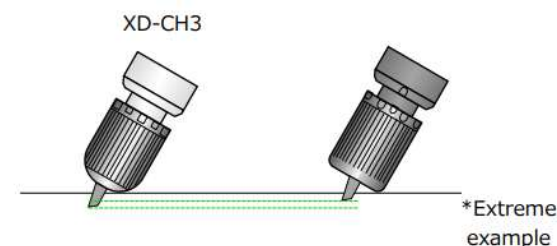
Blade holder

XD-CH3*

XD-CH4-BL

XD-CH4-OR

XD-CH4-RD



* ZEC-U5032 and XD-CH3 included with the machine



Blades by application information is available in the blade [reference guide](#)

The cap edge might hit the media depending on the individual specifications of the machine. In this case, the cutting depth becomes low by the friction between the cap and media. Since the cap edge of XD-CH3 is a curved surface shape, the blade tip can cut in media appropriately

PRODUCT SPECIFICATIONS

Authorised Dealer Use Only



	VersaSTUDIO GS2-24	CAMM-1 GS-24
Product Design		
PRODUCT		
Media Width	50-700mm	50-700mm
Cutting Area (WxL)	548mm x 25M	548mm x 25M
Cutting Speed	10-850mm/s	10-500mm/s
Blade Force	30-500gf	30-350gf
Connectivity	USB / Ethernet	USB
DHCP	Yes	Not Available
SOFTWARE		
Roland DG CutStudio	Yes	Yes
Plug-in for AI/CorelDRAW	Yes	Yes
VersaWorks	VersaWorks can be used with GS2-24 by itself	VersaWorks can be used with GS-24 by itself
Roland DG Connect	Yes (Customers must use "Ethernet" when connecting Roland DG Connect)	Not Available
ACCESSORIES		
Stands	PNS-24	PNS-24
Blade Holder	[Standard] XD-CH3 / [Option] XD-CH4	[Standard] XD-CH3 / [Option] XD-CH4
Blade	ZEC-U5010 / ZEC-U3100 / ZEC-U3075 / ZEC-U5032 / ZEC-U5022 ZEC-U5025 / ZEC-U3017 / ZEC-U1715 / ZEC-U3050	ZEC-U5032 / ZEC-U5022 / ZEC-U5025 / ZEC-U3017 ZEC-U1715 / ZEC-U3050

PRODUCT SPECIFICATIONS

Authorised Dealer Use Only



GS2-24		
Drive system		Digital control servo motor
Cutting mechanism		Media-moving method
Acceptable material size	Width	50 mm to 700 mm (1.97 in. to 27.5 in.)
	Length	Roll material: no restriction Flat material: 100 mm (3.94 in.) or more
Maximum cutting area		584 mm (Width) × 25,000 mm (Length) (22.9 in. × 980 in.)
Cutting speed		10 to 850 mm/s (0.39 to 33.4 in./s)
Blade force		30 to 500gf
Mechanical resolution		0.0125 mm/step (0.49 mil./step)
Software resolution		0.025 mm/step (0.98 mil./step)
Distance accuracy *1		Error of less than ±0.2% of distance traveled or 0.1 mm (3.94 mil.), whichever is greater
Repeatability*1*2		0.1 mm (3.9 mil) or less
Alignment accuracy for printing and cutting when printed material is loaded*1*3		±1 mm (±39.4 mil.) or less for movement distance of 210 mm (8.3 in.) or less in material-feed direction and movement distance of 170 mm (6.7 in.) or less in width direction (Does not take influence of printer and material into account)
Connectivity		<ul style="list-style-type: none"> Ethernet (automatic switching between 10BASE-T and 100BASE-TX) USB 2.0 (FULL SPEED compliant)
Replot memory		2 MB (buffer size: 8 MB)
Command system		CAMM-GL III
Power supply		Dedicated AC adapter Input: 100 - 240 Vac, 50/60 Hz Output: 24 Vdc 2.7 A
Rated current		1.0 A
Acoustic noise level	During operation	70 dB (A) or less
	During standby	40 dB (A) or less
Outer dimensions		860 mm (Width) × 319 mm (Depth) × 235 mm (Height) (33.9 in. × 12.6 in. × 9.3 in.)
Weight		13.5 kg (30 lb.)
Environment		<ul style="list-style-type: none"> Temperature: 5 to 40 °C (41 to 104 °F) Humidity: 20 to 80 %RH (no condensation)
Included items		Power cord, AC adapter, Blade, Blade holder, Roller base, USB cable, Alignment tool, Manuals

*1 According to material and cutting conditions as specified by Roland DG Corporation

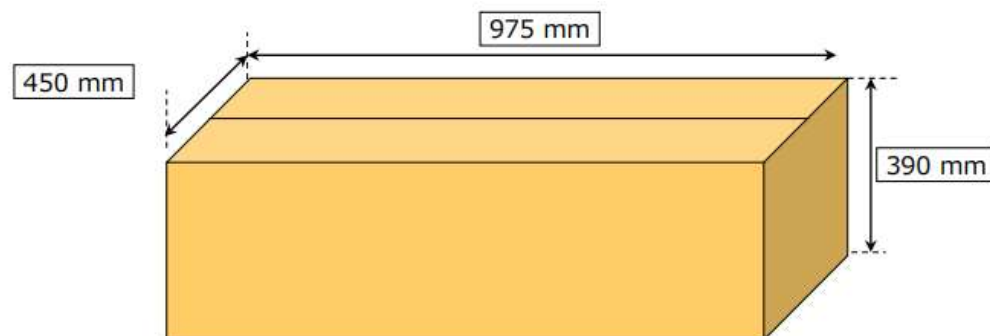
*2 • Excluding expansion/contraction of the media
• Length in sheet feed direction: Within 1600 mm (62.9 in.)

*3 According to measurement standards as specified by Roland DG Corporation.

- Software must be included Roland DG Corporation software.
- Assumes use of a laser or inkjet printer with a resolution of 720 dpi or greater.
- Excludes glossy and/or laminated material.
- Excludes effects of warped printing due to accuracy of printer or effects of expansion/contraction of material.
- May not be read correctly by the sensor depending on the printer ink (black) used.

PACKAGING AND DIMENSIONS

	GS2-24
Dimensions	860 (w) mm x 319 (d) x 235 (h) mm
Dimensions with stand	860 (w) mm x 480 (d) x 970 (h) mm
Package dimensions	975 (w) mm x 450 (d) x 390 (h) mm
Package weight	18 Kg



REFERENCES AND SCHEDULE

REFERENCES

Authorised Dealer Use Only



Code	Description
GS2-24	700mm (24") Vinyl Cutting Plotter
PNS-24	Stand for GS2-24 and BN-20/A
GXS-24	Stand with wheels for GS2-24 and BN-20/A

Stand GXS-24



Stand PNS-24



SCHEDULE

Authorised Dealer Use Only



Items	Time Schedule
Official announcement in EMEA	Sept 14 th , 2022
Shipping Starts	Sept 29 th , 2022



THANK YOU



Francisco Lozano



+34 607 222 623



flozano@rolanddg.com



www.rolanddg.eu